



# ***KITEBOARDING IS EVERYTHING***

NOBILE 2019 COLLECTION



**NOBILE**

# WE ARE EXPERTS. WE KNOW HOW.

Our environment and business is continuously changing, while kiteboarding evolves. But all the while here at Nobile, our values remain the same. Every day we design and manufacture equipment in line with our 'Human Concept' philosophy, bearing the final user in mind, in order to make top-quality, best-performance, and – most importantly – comfortable, safe and user-friendly gear.

While our corporate values remain unchanged, our technological solutions are continuously improved upon.

And we know how to do it, because we have the experience in manufacturing boards with wood cores since 1994, and within kiteboarding for 15 years. All our boards are produced in-house, in our European factory.

Since 2003, when Nobile produced the first technology-based sandwich kiteboard using a wood core, the kiteboarding world has changed dramatically, while we here at Nobile have been continuously improving this technology, and have become experts in it.

The sandwich technology, using wood among other components, allows our engineers to design the board to flex freely.

We call this technology Advanced Flex Engineering (AFE), which includes the following solutions: Added Pre-Stress (APS), Elliptical Concave or Rectangle Channels.

Nobile is unique, as it combines practice and experience with the unrivalled know-how of our experts, in terms of hydrodynamics, aerodynamics, mechanics and material engineering.

This combination of experience and technology has resulted in the latest 2019 product collection, which we proudly present to you here.

COSMIC

## NOBILE IS COSMIC

WHAT INTRIGUES US IN THE EIGHTIES IS A SURPRISING DECORATIVENESS AND GAUDILY DRAWN COLOUR PALETTES GETTING OUT OF CONTROL. BOTH SPECIAL EFFECTS AND DESIGN OF THE EIGHTIES ARE FULL OF FASCINATION FOR GARISHNESS, CONTRASTS, SILVER, METAL AND NEON LIGHTS. AT THAT TIME THE WHOLE CONTEMPORARY WORD WAS FASCINATED WITH OUTER SPACE, STAR TRAVELLING AND DISCOVERING NEW GALAXIES. THIS TREND HAS INSPIRED US FOR CREATIVE AND EMOTIONAL DESIGNER'S JOURNEY TOWARDS FREEDOM AND ADVENTURE. AFTER ALL, EACH FIRST RISE ABOVE WAVES IS LIKE A COSMIC FLIGHT.

COSMIC LINE

PERFORMANCE by NOBILE  
DESIGN by SAATCHI & SAATCHI



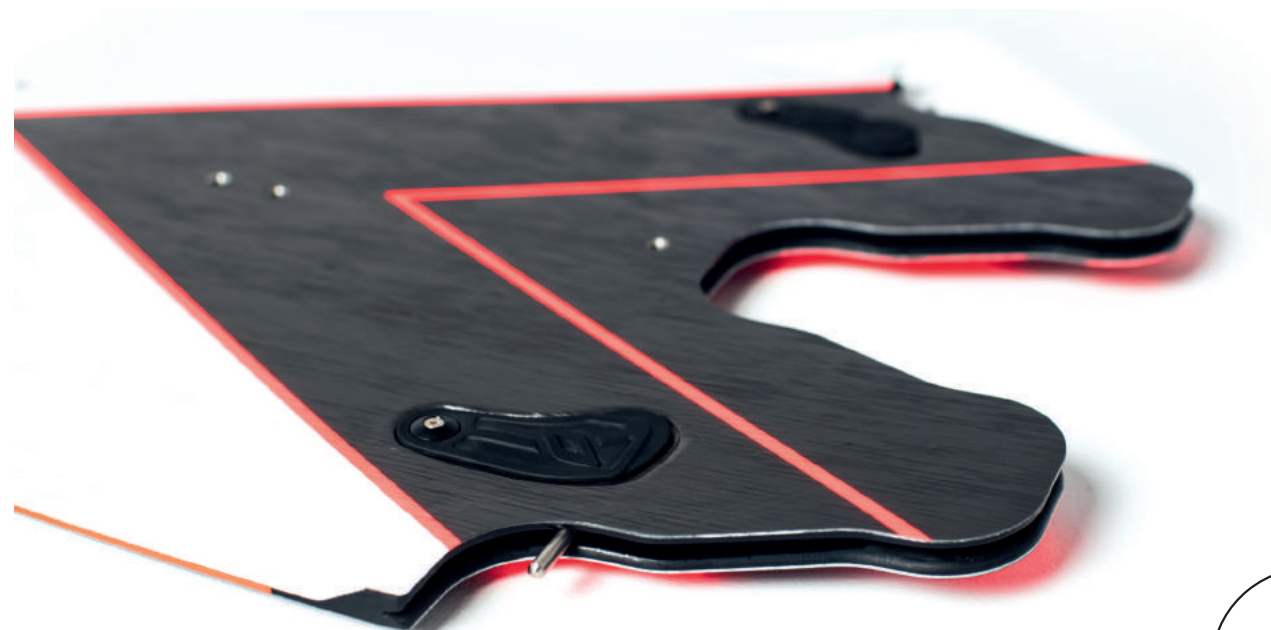
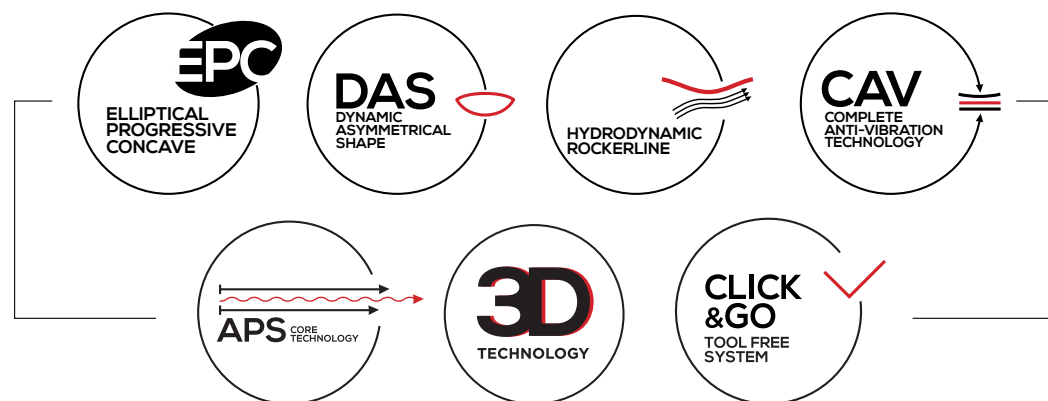
# NOBILE HUMAN CONCEPT PHILOSOPHY

Right from the very beginning, the idea behind all of Nobile's innovations was termed the 'HUMAN CONCEPT' philosophy. The point of this philosophy is to understand that it is the human who is the most important part of the system, because even the best equipment is not able to function by itself. It is the rider who connects all the elements of kitesurfing. In practice, it means that to develop the best equipment we have to analyze and understand the natural advantages and limitations of the human body and mind, and build the gear around them. It's as equally important as the external aspects of the environment in which the equipment will be used: wind and water. It takes scientific knowledge from various disciplines to develop the best performing and truly 'rider-friendly' gear. In short, since the very beginning, performance and safety have been the key issues for us. We never wanted to just produce the kiteboarding equipment, we wanted it to be the best product on the market; the product that sets the standards in terms of safety, performance and comfort, and helps to popularize kiteboarding as a sport.

We believe that safety on the water and the joy of kitesurfing are the most important points, and that's why most of our innovations were never patented or legally reserved exclusively for Nobile, and thanks to this they've already become industry-wide standards. It's worth mentioning that, after developing the first kiteboards to utilize snowboard technology and the first fully molded safety system (Fulcrum), we introduced the ELLIPTICAL PROGRESSIVE CONCAVE (EPC) that combines the advantages of both a flat-bottomed board and concave, and provides very early planing; the DYNAMIC ASYMMETRICAL OUTLINE, because we realized the heel-side edge of the kiteboard should work differently than the toe-side edge; and the HYDRODYNAMIC ROCKER LINE to optimize the water drag (reflected in control over the board and your riding speed). And finally the COMPLETE ANTI VIBRATION (CAV) tech, engineered to provide a faster and more comfortable ride. Constant research on the best flex and torsion lead us to invent ADDED PRE-STRESS TECHNOLOGY (APS) and 3D MULTICHANNEL CONSTRUCTION.

To make kiteboarding more user-friendly we also invented a tool-free mounting system for accessories and Splitboards (the NOBILE CLICK&GO).

## NOBILE HUMAN CONCEPT TECHNOLOGIES



## NSC – NOBILE SPLIT CONNECTION EVOLUTION

Available in all Nobile Splitboards. The NOBILE SPLIT CONNECTION allows you to separate the board in half in seconds and pack it into your standard luggage together with the rest of your travel gear. It provides a strong connection and offers premium durability and improved comfort. Patent Pending No. P403352.

### GEN I and II

Nobile's unique NOBILE SPLIT CONNECTION system allows you to split the board apart in just a few seconds and pack it into a standard travel bag together with the rest of your clothing, to save on the costs of oversized luggage. The system provides a strong connection and offers premium durability without changing the performance of the board.

### GEN III

The improved connection has been redesigned from scratch. Some structural elements have been reduced, while others have been replaced with a durable composite. It translates into reduced weight, as well as improved rigidity and durability.

### GEN IV

The improved connection has again been redesigned from scratch. The connection shape has been completely altered, allowing for a better distribution of pressure. In addition to this, a new shape allows very precise folding and comfortable unfolding of the board. Some structural elements have been reduced, while others have been replaced with a durable composite. It translates into reduced weight, as well as improved rigidity and durability in the connection spot, as well as keeping the natural properties of the board, so the connection won't impact the comfort during your ride.



## APS (TECHNOLOGY ADDED PRE-STRESS)

PRE-STRESSING means the intentional creation of initial tension in a structure, for the purpose of improving its strength properties. In kiteboarding, Pre-Stress allows the board to be loaded with energy during production. Storing the energy inside the board makes it a bit stiffer and far more torsion resistant, which results in astonishing pop on the water. Pre-Stress technology also allows us to build thinner and lighter boards which are actually more durable.

**WHY APS?** We tested two boards of an identical shape, size and bottom shape. One of the boards was equipped with the APS system, while the second board's construction was based on a milled core and mould.

### WHAT DO WE GET?

APS improves torsion by 35%, which translates into:

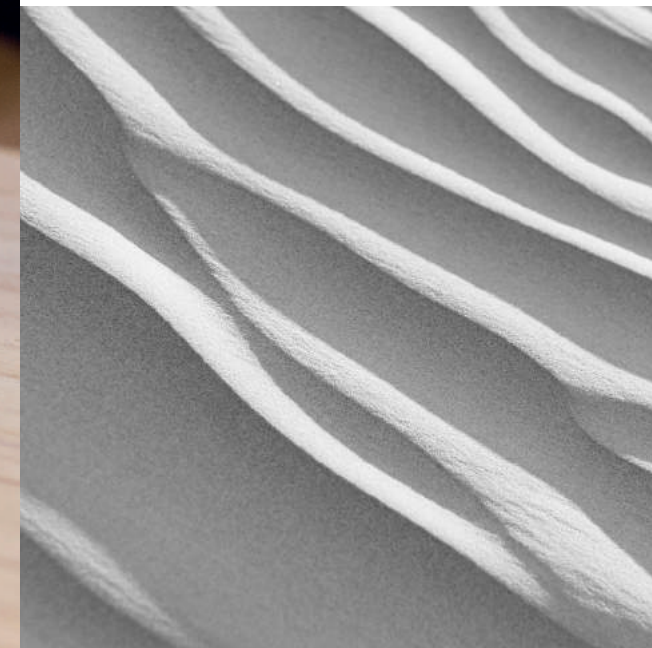
- Better pop
- Better upwind performance
- Great rocker-line grip

**Thanks to the energy stored in the board structure, APS gives you:**

- Better pop
- Better responsiveness

**APS improves durability by 10%, owing to which:**

- The board is lighter
- The board is thinner, yet with the same durability
- The construction materials (including wood) are less prone to wear



## NOBILE CLICK&GO TOOL-FREE SYSTEM

The Nobile CLICK&GO SYSTEM is produced as a standard tool-free mount. It takes just a few seconds to mount/dismount your fins, pads and handle with just your bare hands, meaning a clunky screwdriver is no longer necessary. We redesigned the mounting system to provide a stronger connection between the accessories and the board; it's also easier and faster to mount and demount them.

PRODUCTS EQUIPPED WITH THIS SYSTEM:

- Kiteboards
- IFS: PRO, GEN2
- Grab Handle
- Fins



## ADVANCED FLEX ENGINEERING

We achieve a unique flex and stiffness effect, right where it's required on the board, without any impact or consequence when it comes to the remaining part of the board and its features. In addition to that, the APS system improves torsion by 35% and product durability by 10%. Furthermore, we use less components and the boards are significantly lighter. This kind of development is based on over 20 years of experience, continuous testing, and consultations with top riders and kiteboarding enthusiasts.

### ADVANCED FLEX ENGINEERING: AFE

With our specialist knowledge, we can design and control flex in all directions: lengthwise, transversally and within the torsion. We are able to achieve any given rigidity and flex in the part of the board where it is required the most, without any impact or consequence when it comes to remaining integral to the board and its flex features.





## NHP CARBON SPLIT

FREESTYLE / FREERIDE

SIZE (CM): 134x41, 138x43

### WHY NHP CARBON SPLIT?

The carbon construction makes the board more responsive and dynamic, and it's also responsible for a reduced board weight. Rectangle Trust Channels on the tips guarantee super upwind performance and stability when riding and jumping, while a Split NSC (4th generation) maintains the rocker lines and the performance capabilities of the board. The Split also enables easier transportation and storage, as well as being a solution to extra luggage costs: it's a truly travel-friendly board.

### USED TECHNOLOGIES:

- APS – Added Pre-Stress Technology
- NSC (4th generation)
- Carbon
- 3D Technology
- EPC – Elliptical Progressive Concave
- CAV – Complete Anti-Vibration Technology
- DAS – Dynamic Asymmetrical Shape
- AirLight Core
- Woodcore
- TRIAX
- ABS Sandwich Construction
- Trust Rectangle Channels

FLEX: M/M+/M

ROCKER: Hydrodynamic

**BOTTOM CONSTRUCTION:** Hybrid Concave (Elliptical Concave + Double Trust Rectangle Channels)

### ADDITIONAL EQUIPMENT:

- Fin set – Click'N'Go G10 40mm
- One Hand Cover/NHP

### PURPOSE:

Universal freeride board which performs well in many conditions. Designed for riding in the places you can't go with a big bag...

### FOR WHOM?

For exceptional customers who appreciate the value of a carbon construction



## NHP SPLIT

FREESTYLE / FREERIDE

SIZE (CM): 130x39, 134x41, 138x43

### WHY THE NHP SPLIT?

Rectangular channels on the tips guarantee super upwind performance and stability when riding and jumping on the NHP Split, and a perfectly designed Hydrodynamic rocker line improves the comfort, maneuverability and pop. The rocker means the board performs well in chop, while a Split W-Connection (4th generation) maintains the rocker lines and the performance capabilities of the board. The Split also enables easier transportation and storage, as well as being a solution to extra luggage costs –it's a truly travel-friendly board. The Dynamic Asymmetrical Shape gives it a longer back-side edge, guaranteeing perfect control during the ride, while a shorter toe-side edge translates into fast and agile turns.

### USED TECHNOLOGIES:

- APS – Added Pre-Stress Technology
- W-Connection (4th generation)
- 3D Technology
- EPC – Elliptical Progressive Concave
- DAS – Dynamic Asymmetrical Shape
- CAV – Complete Anti-Vibration Technology
- TRIAX
- Woodcore
- ABS Sandwich Construction
- Trust Rectangle Channels

FLEX: M/M+/M

ROCKER: Hydrodynamic

**BOTTOM CONSTRUCTION:** Hybrid Concave (Elliptical Concave + Double Trust Rectangle Channels)

### ADDITIONAL EQUIPMENT:

- Fin set – Click'N'Go G10 40mm
- One Hand Cover/NHP

### PURPOSE:

All-round, freestyle-oriented board for riding in any conditions. Easy to ride from flat water, through chop, and up to small waves.

### FOR WHOM?

For any rider who values user-comfort and is keen to reduce their travel costs



## INFINITY CARBON SPLIT

WAVE

SIZE: 5'6"

### WHY INFINITY CARBON SPLIT?

This is high/end split board for wave enthusiasts. NSC has been redesigned from last year. This shape has been improved completely, which resulted in better distribution of the force here. Furthermore, a NSC shape allows precise connecting and comfortable disconnecting the board. Carbon fabric improves the torsional stiffness and reduces the board's weight. Some of the connection's constructional elements have been reduced, while others have been replaced with durable composite. The board is lighter, stiffer and much more resistant to breakage. Infinity Carbon Split is a wave folding board you can transport in luggage less than 95 cm long. It facilitates everyday transport of the board: by car, train or motorcycle, but most of all in airlines. The deck is covered with EVA foam, ensuring comfort and keeping your feet in the right position. Thanks to the use of Hybrid Concave, the Infinity is manoeuvrable and has very good carving abilities. Wave riding on the Infinity Splitboard is really a great fun!

### USED TECHNOLOGIES:

- NSC (3th generation)
- APS – Added Pre-Stress Technology
- ABS Sandwich Construction
- EPC – Elliptical Progressive Concave
- CAV – Complete Anti-Vibration Technology
- Woodcore
- Air Light Core

FLEX: H/M+/S

ROCKER: Directional

**BOTTOM CONSTRUCTION:** Hybrid Concave (Elliptical Concave + Double Concave Tip Channel)

### ADDITIONAL EQUIPMENT:

- Fin set – FCS Fins 4'7
- One Hand Cover/Infinity

### PURPOSE:

Universal freeride and freestyle wave board which performs well in many conditions.

### FOR WHOM?

High-end wave ride board. For kiteboarders who travel a lot and appreciate the value of a splitboard.



## INFINITY SPLIT

WAVE

SIZE: 5'6"

### WHY INFINITY SPLIT?

This year we improved 3rd generation of NOBILE SPLIT CONNECTION - NSC has been redesigned from last year. This shape has been improved completely, which resulted in better distribution of the force here. Furthermore, a NSC shape allows precise connecting and comfortable disconnecting the board. Some of the connection's constructional elements have been reduced, while others have been replaced with durable composite. The board is lighter, stiffer and much more resistant to breakage. Infinity Split is a wave folding board you can transport in luggage less than 95 cm long. It facilitates everyday transport of the board: by car, train or motorcycle, but most of all in airlines. The deck is covered with EVA foam, ensuring comfort and keeping your feet in the right position. Thanks to the use of Hybrid Concave, the Infinity is manoeuvrable and has very good carving abilities. Wave riding on the Infinity Splitboard is really a great fun!

### USED TECHNOLOGIES:

- NSC (3th generation)
- ABS Sandwich Construction
- EPC – Elliptical Progressive Concave
- CAV – Complete Anti-Vibration Technology
- TRIAX
- Woodcore
- Air Light Core

FLEX: H/M+/S

ROCKER: Directional

**BOTTOM CONSTRUCTION:** Hybrid Concave (Elliptical Concave + Double Concave Tip Channel)

### ADDITIONAL EQUIPMENT:

- Fin set – FCS Fins 4'7
- One Hand Cover/Infinity

### PURPOSE:

Universal freeride and freestyle wave board which performs well in many conditions.

### FOR WHOM?

For wave lovers who travel a lot and appreciate the value of a splitboard.



INFINITY FOIL SPLIT

FOIL / WAVE

SIZE: 5'2"

**WHY INFINITY FOIL SPLIT?**  
Unique foil board! This is only one foil splitboard. We precisely redesign the connection to have more perfect connection and improve all the features of 4th generation of NSC. The board has a very thin core which lets you put your feet very close to the water or hydrofoil and, as a result, facilitates steering and board feeling. The deck is covered with EVA foam, ensuring comfort and keeping your feet in the right position. Thanks to the use of Hybrid Concave, the Infinity is manoeuvrable and has very good carving abilities. Channels significantly improve the board stability during wave riding. Infinity Foil Split is a wave folding board you can transport in luggage less than 90 cm long. It facilitates everyday transport of the board: by car, train or motorcycle, but most of all in airlines.

- USED TECHNOLOGIES:**
- NSC (4th generation)
  - The CAP construction
  - APS – Added Pre-Stress Technology
  - EPC – Elliptical Progressive Concave
  - CAV – Complete Anti-Vibration Technology
  - Woodcore
  - Air Light Core

**FLEX:** H/H/M

**ROCKER:** Directional

**BOTTOM CONSTRUCTION:** Hybrid Concave (Elliptical Concave + Dual Tip Channel)

- ADDITIONAL EQUIPMENT:**
- Fin set – FCS Fins 4'7
  - One Hand Cover/Infinity

**PURPOSE:**  
Foil user best splitboard on the market for freeride and some freestyle too.

**FOR WHOM?**  
If you like foil ride you have to have this board in your bag – small travel bag of course 'cause this is travel friendly splitboard.



FLYING CARPET SPLIT

LIGHTWIND / SCHOOL

SIZE (CM): 160x46

**WHY THE FLYING CARPET SPLIT?**  
This is a big, wide and stable board model. The Dynamic Asymmetrical Shape guarantees very good upwind performance thanks to the long backside edge, and due to the AirLight Core construction, the board maintains a unique comfort during the ride, despite being such a big size. It's the only Lightwind board on the market which takes up less space after folding it up than the twintip board does. This board is for everyone who wants to travel with a Lightwind option.

- USED TECHNOLOGIES:**
- APS Added Pre-Stress Technology
  - NSC 3th generation
  - DAS – Dynamic Asymmetrical Shape
  - CAV – Complete Anti-Vibration Technology
  - TRIAX
  - Woodcore
  - AirLight Core
  - ABS Sandwich construction

**FLEX:** S/M+/S

**ROCKER:** Flat Continuous

**BOTTOM CONSTRUCTION:** Wavy Channels System

- ADDITIONAL EQUIPMENT:**
- Fin set – Click'N'Go G10 55mm
  - One Hand Coverbag/Flying Carpet



NHP CARBON

FREESTYLE / FREERIDE

SIZE (CM): 134x41, 138x43

**WHY NHP CARBON?**  
The carbon used in the construction makes the board extremely responsive and precise, and the minimized board weight makes every trick or evolution easier. The NHP Carbon gives perfect upwind performance and turning precision, while the Hydrodynamic Rocker Line and a Dynamic Asymmetrical Shape give the rider full control in any given conditions.

- USED TECHNOLOGIES:**
- EPC – Elliptical Progressive Concave
  - DAS – Dynamic Asymmetrical Shape
  - CAV – Complete Anti-Vibration Technology
  - TRIAX
  - AirLight Core
  - Woodcore
  - ABS Sandwich Construction
  - Carbon

**FLEX:** M/H/M

**ROCKER:** Hydrodynamic

**BOTTOM CONSTRUCTION:** Hybrid Concave (Elliptical Concave + Double Concave Tip Channels)

- ADDITIONAL EQUIPMENT:**
- Set of fins – Click'N'Go G10 55mm

**PURPOSE:**  
Freeride/freestyle board. Performs well in all conditions.

**FOR WHOM?**  
For semi-advanced and advanced riders who are seeking out top performance and a luxurious board that will perform well in any given conditions.



NHP

FREESTYLE / FREERIDE

SIZE (CM): 134x41, 138x43, 142x45

**WHY THE NHP?**  
The Hydrodynamic Rocker Line and Dynamic Asymmetrical Shape give the rider full control in any given conditions. A longer back-side edge means better upwind performance, while a shorter toe-side edge gives maneuverability which is useful for freestyle tricks. A larger rocker enables easier cutting and better performance in rough waters. Our perfectly designed X-Reactive Flex combined with the rocker translates into a seriously comfortable ride that forgives mistakes.

There's a low-wind version of this model in the NHP size range, with a construction based on Elliptical Concave and Flat Hydrodynamic Rocker solutions, and then modified to keep the NHP properties in a bigger size.

- USED TECHNOLOGIES:**
- APS – Added Pre-Stress Technology
  - EPC – Elliptical Progressive Concave
  - DAS – Dynamic Asymmetrical Shape
  - X-Reactive Flex System
  - CAV – Complete Anti-Vibration Technology
  - TRIAX
  - Woodcore
  - ABS Sandwich Construction

**FLEX:** M/M/M

**ROCKER:** Hydrodynamic

**BOTTOM CONSTRUCTION:** Hybrid Concave (Elliptical Concave + Double Concave Tip Channels)

- ADDITIONAL EQUIPMENT:**
- Fin system – Click'N'Go G10 55mm

**PURPOSE:**  
Freestyle/freeride model, that is easy to ride in all conditions – from flat water, through slight chop, up to small waves.

**FOR WHOM?**  
For everybody who wants to go freeride or freestyle. If you want a comfortable board which gives precision during freestyle tricks, it's the one for you.





## NHP WMN

FREESTYLE / FREERIDE

SIZE (CM): 129x38, 132x40, 135x41

**WHY THE NHP WMN?**  
The shape and sizes of this board are specifically tailored for the female kitesurfer, with the board's construction and flex designed to distinct requirements based on feedback from our female riders. With our enhanced knowledge of flex engineering, this female model of the NHP is lighter compared to the standard model, while it has professionally adjusted offset straps and a flex that suits the lighter, subtler build of the female body perfectly.

The rocker size and the Asymmetrical Construction give the rider full control in all conditions. Our perfectly designed X-Reactive Flex combined with the rocker translates into a seriously comfortable ride that forgives mistakes.

- USED TECHNOLOGIES:**
- APS – Added Pre-Stress Technology
  - EPC – Elliptical Progressive Concave
  - DAS – Dynamic Asymmetrical Shape
  - CAV – Complete Anti-Vibration Technology
  - TRIAX
  - Woodcore
  - X-reactive Flex System
  - ABS Sandwich Construction

**FLEX:** M/M/M

**ROCKER:** Hydrodynamic

**BOTTOM CONSTRUCTION:** Hybrid Concave (Elliptical Concave + Double Concave Tip Channels)

- ADDITIONAL EQUIPMENT:**
- Fin set – Click'N'Go G10 55mm

**PURPOSE:**  
A true freestyle board, easy to ride in any conditions – from flat water in to chop.

**FOR WHOM?**  
For women looking for a truly unique freestyle board. This model lets you develop your freestyle skills with ease.



## 50/FIFTY

FREESTYLE / FREERIDE / WAKESTYLE

SIZE (CM): 131x38.5 (junior), 134x39, 138x39.5, 140x42, 143x43

**WHY THE 50/FIFTY?**  
Flex Engineering allowed us to design our flex according to the highest requirements, and properly adjusted parameters allowed us to feature flex and inverted flex in the board, meaning tricks can be completed quickly and safely every time. It is a classic twintip, and central positioning of the inserts gives the rider 100% certainty of completing tricks with full control, as well as promising a safe landing. Thanks to the Multi Channel bottom construction, the board is rigid and reacts quickly, while the Hydrodynamic Rocker Line guarantees great upwind performance, generates super pop and allows immediate response. Mounting wake boots to the board is also possible.

- USED TECHNOLOGIES:**
- APS Added Pre-Stress Technology
  - 3D Technology
  - EPC – Elliptical Progressive Concave
  - X-Reactive Flex System
  - Woodcore
  - TRIAX
  - ABS Sandwich construction
  - CAV – Complete Anti-Vibration Technology

**FLEX:** M/H/M

**INVERTED FLEX:** H/H/H

**ROCKER:** Hydrodynamic

**BOTTOM CONSTRUCTION:** Multi Channels System

- ADDITIONAL EQUIPMENT:**
- Fin set – Click'N'Go G10 40mm

**PURPOSE:**  
Power Freestyle and Wakestyle

**FOR WHOM?**  
This is a board for experienced users who know what they want and are freestyle-oriented.



## 2HD

FREERIDE / FLAT WATER

SIZES (CM): 134x42.5, 137x43

**WHY 2HD?**  
The Hydrodynamic Rocker Line is designed for maximum speed and early planing. Its shape gives very good upwind performance, designed to avoid water resistance at high speeds, and it is constructed using Pop Grower technology, to ensure the most explosive pop. It was also designed to withstand hard landings after performing Big Airs and Megaloops. With the best upwind performance and hard edge grip, 2HD is the fastest board in the twintip collection

- USED TECHNOLOGIES:**
- APS – Added Pre-Stress Technology
  - EPC – Elliptical Progressive Concave
  - CAV – Complete Anti-Vibration Technology
  - TRIAX
  - Woodcore
  - Pop Grower
  - ABS Sandwich Construction

**FLEX:** S/M/S

**ROCKER:** Hydrodynamic

**BOTTOM CONSTRUCTION:** Double Hydrodynamic

- ADDITIONAL EQUIPMENT:**
- Fin set – Click'N'Go G10 55mm

**PURPOSE:**  
This board is dedicated to fast, aggressive riding at high speed on flat water. Best suited for Megaloops and Big Airs, and created for perfect conditions.

**FOR WHOM?**  
For users who already know how to ride and are now on the hunt for fast fun, as well as being the best board for hooked-in flights. This board is suited to a customer who is aware of his or her skills...



## T5

FREERIDE / FREESTYLE

SIZES (CM): 134x41, 137x42, 140x44

**Why T5?**  
The T5's Flat Continuous Rocker gives the board speed and insane upwind performance, while the long backside edge of the Dynamic Asymmetrical Shape ensures perfect control during the ride and enhances the board's upwind performance even further. The shorter toeside edge translates into fast and agile turns, which makes riding on the T5 very smooth indeed. The board's shape makes it easy to learn freestyle, and it is also recommended for learning edge jumps, and the T5 is fully prepared to forgive mistakes...

- ADVANCED TECHNOLOGIES:**
- APS – Added Pre-Stress Technology
  - EPC – Elliptical Progressive Concave
  - DAS – Dynamic Asymmetrical Shape
  - TRIAX
  - CAV – Complete Anti-Vibration Technology
  - TRIAX

**FLEX:** S/M/S

**ROCKER:** Flat Continuous

**BOTTOM CONSTRUCTION:** Wavy Channels

- ADDITIONAL EQUIPMENT:**
- Fin set: Click'N'Go G10 55mm

**PURPOSE:**  
A freeride board for riding in all conditions. Dedicated to riding in flat water, through choppy conditions, up to small waves in light and strong winds.

**ADDITIONAL INFO**  
Gives full satisfaction of use, regardless of skills.  
The only tool-free fin assembly system on the market – Nobile Click'N'Go.

**FOR WHOM?**  
For all users who know how to ride and want to develop their skills. The T5 is a very good choice for advanced users who aren't freestyle-oriented.



T5 WMN

FREERIDE / FREESTYLE

SIZE (CM): 131x39, 134x40

**WHY THE T5 WMN?**  
The shape and sizes of this board are specifically tailored for the female kitesurfer, with the board's construction and flex designed to distinct requirements based on feedback from our female riders. With our enhanced knowledge of flex engineering, this female model of the T5 is lighter compared to the standard model, while it has professionally adjusted offset straps and a flex that suits the lighter, subtler build of the female body perfectly.

The board's Dynamic Asymmetrical Shape means it has a longer back-side edge, guaranteeing perfect control during the ride, while a shorter toe-side edge translates into fast and agile turns. The T5 has good flexibility, which helps when taking off and landing jumps. The board's shape makes it easy to work on your freestyle game, and it is also highly recommended for learning edge jumps as well... And don't worry: this board forgives mistakes.

- USED TECHNOLOGIES:**
- APS – Added Pre-Stress Technology
  - EPC – Elliptical Progressive Concave
  - DAS – Dynamic Asymmetrical Shape
  - CAV – Complete Anti-Vibration Technology
  - TRIAX
  - Woodcore
  - ABS Sandwich construction

**FLEX:** S/M/S

**ROCKER:** Flat Continuous

**BOTTOM CONSTRUCTION:** Wavy Channels System

- ADDITIONAL EQUIPMENT:**
- Fin set – Click'N'Go G10 55mm

**PURPOSE:**  
A freeride board for riding in any and all conditions, be that flat water, rough seas, or even small waves, both in low and strong winds.

**FOR WHOM?**  
For every woman want



FLYING CARPET

LIGHTWIND / SCHOOL

SIZE (CM): 160x46

**WHY THE FLYING CARPET?**  
This is a big, wide and stable board model. The Dynamic Asymmetrical Shape guarantees very good upwind performance thanks to the long backside edge, and with the AirLight Core construction, the board maintains a unique comfort during the ride, despite being such a big size.

- USED TECHNOLOGIES:**
- APS Added Pre-Stress Technology
  - AirLight Core
  - CAV – Complete Anti-Vibration Technology
  - TRIAX
  - Woodcore
  - ABS Sandwich construction

**FLEX:** S/M/S

**ROCKER:** Flat Continuous

**BOTTOM CONSTRUCTION:** Wavy Channels System

- ADDITIONAL EQUIPMENT:**
- Fin set – Click'N'Go PA 55mm
  - CLICK'N'GO IFS PRO

**PURPOSE:**  
A training board for making those first tentative kite steps. Dedicated to riding in low winds, in open and closed reservoirs.

**FOR WHOM?**  
For kite schools and their tutors, and as an alternative for everybody in low-wind conditions.



FLYING CARPET TANDEM

LIGHTWIND / SCHOOL

SIZE (CM): 163x48

**WHY THE FLYING CARPET TANDEM?**  
This bigger board size allows for riding in pairs. The board has a reinforced construction, and thanks to AirLight Core it maintains a unique comfort during the ride, despite being such a big size. The Dynamic Asymmetrical Shape also guarantees very good upwind performance thanks to the long backside edge. For this model, we introduced double inserts, so two pairs of IFS's (for two people) can be mounted for riding with someone else.

- USED TECHNOLOGIES:**
- APS Added Pre-Stress Technology
  - DAS – Dynamic Asymmetrical Shape
  - CAV – Complete Anti-Vibration Technology
  - TRIAX
  - Woodcore
  - AirLight Core
  - ABS Sandwich construction

**FLEX:** M/H/M

**ROCKER:** Flat Continuous

**BOTTOM CONSTRUCTION:** Wavy Channels System

- ADDITIONAL EQUIPMENT:**
- 2XCLICK'N'GO IFS PRO

**PURPOSE:**  
A training board for making those first tentative kite steps. Dedicated to riding in low winds, in open and closed reservoirs.

**FOR WHOM?**  
For kite schools and their tutors, and as an alternative for everybody in low-wind conditions.



NBL

FREERIDE / FREESTYLE

SIZE (CM): 134x39, 138x4.5, 142x42, 146x43, 150x45

**WHY THE NBL?**  
The NBL is a very simple, predictable board model with great upwind performance. It has a wider and more stable shape, so everyone can feel at ease on it quickly. The NBL is the perfect model for learning freestyle, allowing each rookie to spread his or her wings and build solid skills. Comes in a wide range of sizes.

- USED TECHNOLOGIES:**
- Elliptical Progressive Concave
  - CAV – Complete Anti-Vibration Technology
  - Woodcore
  - TRIAX
  - ABS Sandwich Construction

**FLEX:** S/M/S

**ROCKER:** Flat Hydrodynamic

**BOTTOM CONSTRUCTION:** Elliptical Concave

- ADDITIONAL EQUIPMENT:**
- Fin set – Click'N'Go PA 55mm
  - Click'N'Go IFS Pro

**PURPOSE:**  
This should be the first board for everyone. A precisely fitted size works well in all conditions.

**FOR WHOM?**  
For begginers and regular riders who wants to learn freestyle tricks.





FOIL SKIM

FOIL / WAVE

SIZE: 146x46,5

**WHY FOIL SKIM?**  
We achieved lower weight and better stiffness, which significantly improves wave riding quality. The board has a very thin core which lets you put your feet very close to the water or hydrofoil and, as a result, facilitates steering and board feeling. The deck is covered with EVA foam, ensuring comfort of keeping the right position. Channels running along the board considerably improve the board stability during wave riding. We have also used the CAP construction which has a box-type structure, where the edge of a wooden wedge is fully secured with a laminate. The board is lighter, stiffer and much more resistant to breakage.

- USED TECHNOLOGIES:**
- APS – Added Pre-Stress Technology
  - CAV – Complete Anti-Vibration Technology
  - TRIAX
  - Woodcore
  - CAP Construction
  - Woodcore

**FLEX:** H/H/M

**ROCKER:** Directional

**BOTTOM CONSTRUCTION:** Wavy Channels System

- ADDITIONAL EQUIPMENT:**
- Fin Set - PA 55mm

**PURPOSE:**  
One of the best foil board on the market. Very smooth ride on foil.

**FOR WHOM?**  
For every foil user. Comfortable oard with best technologies from Nobile.

SKIM

FREERIDE

SIZE (CM): 130x50.5

**WHY SKIM?**  
The Skim is a wider model with ample stability. It is covered with a specially-structured EVA foam, which guarantees extremely good grip on the water, while the Flat Directional Rocker ensures supreme comfort during up-wind and low-wind riding.

- USED TECHNOLOGIES:**
- APS – Added Pre-Stress Technology
  - CAV – Complete Anti-Vibration Technology
  - TRIAX
  - Woodcore
  - ABS Sandwich Construction

**FLEX:** H/M/M

**ROCKER:** Flat Directional

**BOTTOM CONSTRUCTION:** Wavy Channels System

- ADDITIONAL EQUIPMENT:**
- Fin set – Click'N'Go PA 40mm

**PURPOSE:**  
For fun times and for and learning strapless riding on low-wind days. The Skim captures the true spirit of kitesurfing.

**FOR WHOM?**  
For every kitesurfer who wants to ride strapless on small waves.



NOBILE T5 KITE

FREERIDE/WAVE

SIZE (M): 5, 6, 7.5, 9, 10, 12, 14

- MAIN FEATURES:**
- Shape: hybrid kite excellent for wave riding
  - Exceptional freeride and wave performance
  - Great lift and hang time for big airs
  - Big depower and turning speed dedicated for wave riding
  - Great control combined with soft bar feeling
  - High lift, low drag profiles
  - Superb upwind performance
  - 3-strut construction
  - Tough construction dedicated for wave riding and schools
  - Easy to relaunch
  - Quick inflating/deflating screw valve
  - One-pump system
  - Quick and easy setup
  - Bridles with pulleys, owing to which the kite has a wider lower range, it doesn't fall, it's more stable in the zenith and has a better relaunch
  - More durable lines at the pulleys on bridles
  - Improved sewing technology and quality
  - 4-line control bar system
  - Colour-coded and fool-proof line connectors

**SHAPE:** Hybrid

- MATERIALS:**
- T9675 Double Ripstop Teijin;
  - T9600 Ripstop Teijin;
  - Dacron Ripstop
  - Double-layer Dacron on bridle attachment points
  - Double-stitched bonded seams
  - Dacron reinforced canopy (tips, canopy stripes, leading edge and trailing edge)
  - Bladder construction with double-layer section in wear areas
  - Catch-free one pump valves position
  - Thin LE & Strut ends

The Nobile T5 Kite is simply one of the best kites on the market. The idea was to design a stable, durable kite which ensures full control in all weather conditions. It is used by everyone from experienced kilters through to kiting schools. You can always count on it.

It is great in any conditions and is a favourite for fans of wave riding, where the steering simplicity and the kite's stability matter.

This year we have introduced additional reinforcements and a new canopy material – Double Ripstop Teijin, which has been tested in the most difficult conditions. It is super-durable and resistant to mechanical damage, as well as climactic conditions, such as salt water, high temperature and sand. This kite will serve you for many years.

NOBILE 50/FIFTY KITE

FREERIDE/WAKESTYLE

SIZE (M): 5, 7, 9, 10, 12, 14

- MAIN FEATURES:**
- Shape: hybrid C-shape and full bridles which combines the advantages of both types
  - High freestyle and wakestyle performance
  - Bridles with no pulleys give better control and direct feeling
  - Great lift and pop combined with constant power while performing tricks
  - Great control combined with medium bar feeling
  - Fast, low drag, quickly generating power profiles
  - Floating strut eliminates gusty wind effects
  - 5-strut construction
  - Easy to relaunch
  - Quick inflating/deflating screw valve
  - One-pump system
  - Quick and easy setup
  - Improved sewing technology and quality
  - 4-line control bar system
  - Colour-coded and fool-proof line connectors

**SHAPE:** Hybrid C-shape with full bridles

- MATERIALS:**
- T9675 Double Ripstop Teijin;
  - T9600 Ripstop Teijin;
  - Dacron Ripstop
  - Double-layer Dacron on bridle attachment points
  - Double-stitched bonded seams
  - Dacron reinforced canopy (tips and trailing edge)
  - Bladder construction with double-layer section in wear areas
  - Catch-free one pump valves position
  - Thin LE & Strut ends

50/Fifty is the Superman of kites. It will do anything you want in the blink of an eye and is used by all Nobile pro-riders.

We have combined the advantages of C-shape kites with complete, stiff bridling, thus getting the best features of both types of kite.

The 50/Fifty quickly generates huge power that remains during tricks and allows you to reduce the power immediately. It is also characterized by an immediate reaction to steering and an incredibly connected feeling on the bar. It is extremely stable and easy to relaunch, and is very light which makes it fast, responsive and provides a wide wind range.

The innovations here are extra reinforcements and the new material – Double Ripstop Teijin – which has been tested in the most difficult conditions. It is super-durable and resistant to mechanical damage, as well as climactic damage, such as that from salt water, high temperature and sand.



NOBILE MR. BIG KITE

FREERIDE/LIGHTWIND

SIZE (M): 17

- MAIN FEATURES:
- Shape: flat bow dedicated for lighter wind conditions
  - Low wind performance
  - High freeride performance
  - Flat shape generating huge power
  - Great lift and hang time for big airs
  - Big depower and fast turning speed optimized for low wind conditions
  - Great control combined with soft bar feeling
  - High lift, very low drag profiles
  - Superb upwind performance
  - 6-strut construction
  - Light construction dedicated for low wind conditions
  - Easy to relaunch
  - Quick inflating/deflating screw valve
  - One-pump system
  - Quick and easy setup
  - Bridles with pulleys, owing to which the kite has a wider lower range, it doesn't fall, it's more stable in the zenith and has a better relaunch
  - More durable lines at the pulleys on bridles
  - Improved sewing technology and quality
  - 4-line control bar system
  - Colour-coded and fool-proof line connectors

SHAPE: Eliptical Flat

- MATERIALS:
- T9600 Ripstop Teijin;
  - Dacron Ripstop
  - Double-layer Dacron on bridle attachment points
  - Double-stitched bonded seams
  - Dacron reinforced canopy (tips and trailing edge)
  - Bladder construction with double-layer section in wear areas
  - Catch-free one pump valves position
  - Thin LE & Strut ends

Mr. Big is the biggest kite in the Nobile collection and, as you would expect, has been built to withstand low-wind conditions. Our engineers have managed to design a kite which, despite its great size, doesn't lose the agility, quickness and steering responsiveness of a smaller kite. It has a specific shape – flattened in the middle part – which enables it to find power in lower winds and you can ride it upwind and perform your tricks.

We have introduced the lightest and the most durable materials (T9600 Ripstop Teijin, Dacron Ripstop) and used a reduced number of reinforcements thus making it very light.

NOBILE NO. 1 KITE

TRAINING

SIZE (M): 3,5

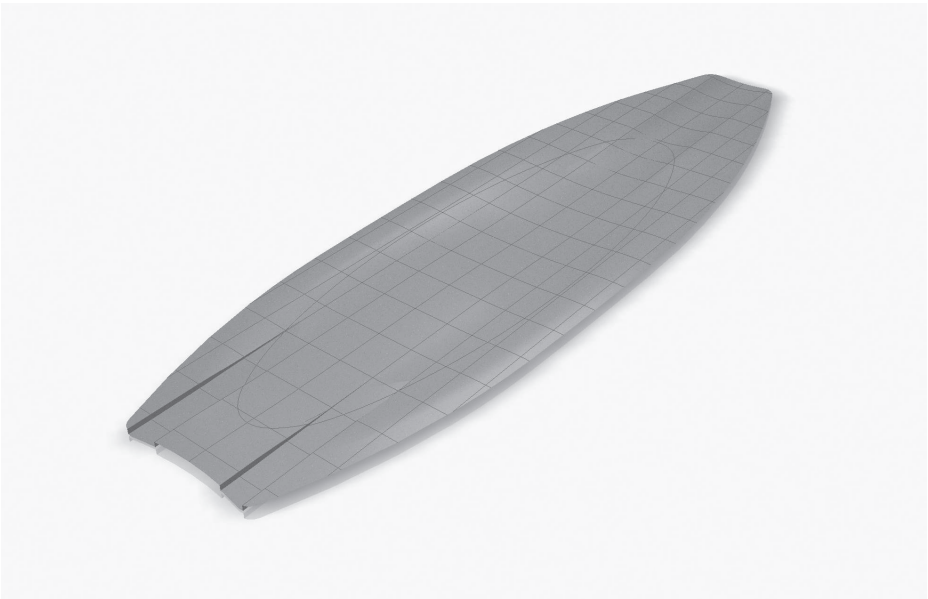
- MAIN FEATURES:
- shape: hybrid kite designed for training
  - Best for beach training, bodydrag, first steps in water
  - Easy and forgiving
  - Soft bar feeling
  - Floating strut eliminates gusty wind effects
  - 3-strut construction
  - Tough construction dedicated for schools
  - Easy to relaunch
  - One-pump system
  - Quick and easy setup
  - Improved sewing technology and quality
  - Fully compatible with Nobile 4-line control bar system
  - Colour-coded and fool-proof line connectors

SHAPE: Hybrid

- MATERIALS:
- T9600 Ripstop Teijin;
  - Dacron Ripstop
  - Double-layer Dacron on bridle attachment points
  - Double-stitched bonded seams
  - Dacron reinforced canopy (tips and trailing edge)
  - Bladder construction with double-layer section in wear areas
  - Catch-free one pump valves position
  - Thin LE & Strut ends

Nobile No.1 is a professional kite designed for helping beginners to learn about all aspects of kite flying. It has all the features of a standard water kite, so allows beginners to learn all kite manoeuvres, including power regulation and emergency systems. The small surface area makes this training kite easy to fly and very user-friendly.

BOARDS BASES



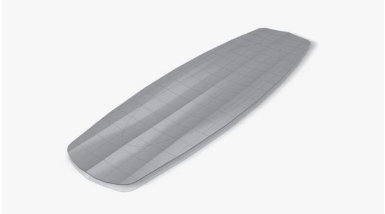
HYBRID CONCAVE

(Elliptical Concave + Double Concave Tip Channels)

BOARDS: NHP, NHP WMN, NHP SPLIT CARBON

The Elliptical Concave combined with the tip-to-tip double concave channels has been designed especially for pure freeride fun. The boards have good grip, and ride like they're on a rail – they are super controllable and boast excellent upwind performance. All these features combined result in incomparable rider comfort.

- Advantages:
- Great control.
  - Early planing.
  - Super upwind performance.
  - Comfortable ride.
  - Smooth response.



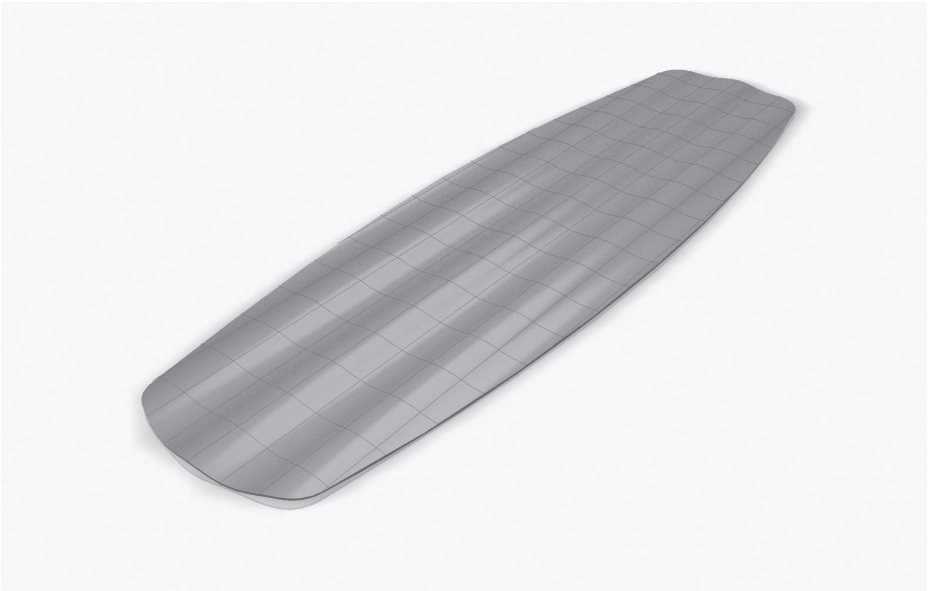
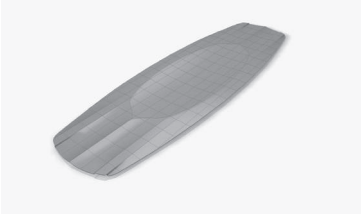
HYBRID CONCAVE

(Elliptical Concave + Double Trust Rectangular Channels)

BOARDS: NHP SPLIT, NHP SPLIT CARBON

This concave combined with the double concave tip channels work seriously well when freeriding. The boards have good grip and are easily controllable. Additional step channels at the fins improve control, enhance upwind performance, and allow the rider to mount shorter fins.

- Advantages:
- Great control.
  - Early planing.
  - Super upwind performance.
  - Comfortable ride.
  - Smooth response.
  - Ability to use shorter fins.



WAVY CHANNELS

BOARDS: FLYING CARPET, FLYING CARPET TANDEM, FLYING CARPET SPLIT, SKIM BOARD

Wavy channels from tip-to-tip of the whole board stabilizes it throughout the ride, and guarantees excellent rider comfort. This type of wavy channel stiffens the whole board along its entire length, meaning it can be built thinner and lighter, reducing the weight of the board significantly, especially in the bigger sizes.

- Advantage:
- Stable ride.
  - Comfortable feeling.
  - Very good upwind performance.



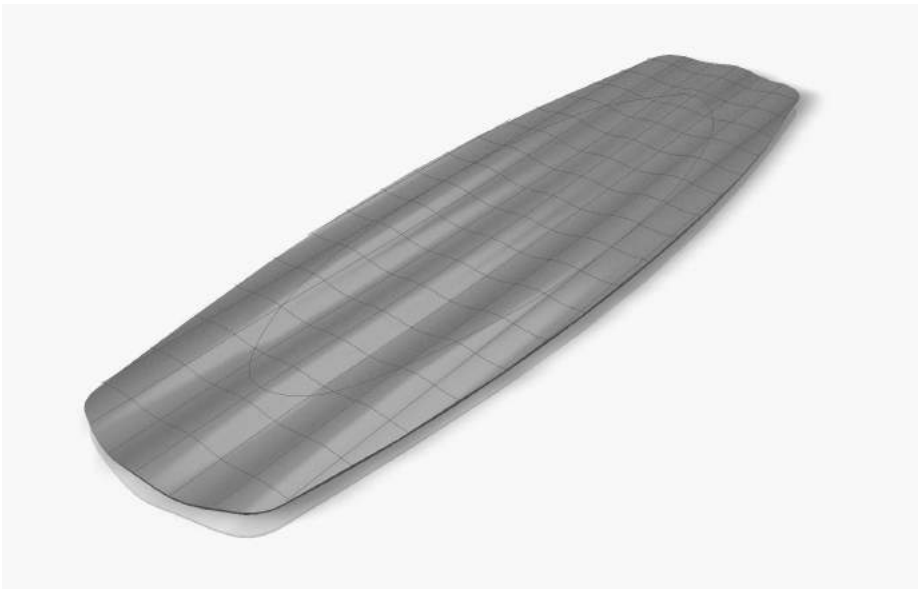


ELLIPTICAL CONCAVE

BOARD: NBL

The NBL's single concave simplifies the initial steps when learning kitesurfing. The board has good grip, and rides loose but under full control. Water starts are easier as well, while any technical weakness from the rider is nicely minimized thanks to this very user-friendly board.

- Advantages:
- Good control.
  - Early planing.
  - A forgiving board.



HYBRID WAVY CHANNELS

(Elliptical Concave + Wavy Channels)

BOARDS: T5, T5 WMN

Wavy channels along the board, where the Elliptical Concave has been used as well, allows the rider to enjoy the full freeride experience. Board control is simply perfect, while minor technical weaknesses on the part of the rider are reduced. Riding upwind is nothing but a pure pleasure...

- Advantages:
- Great control.
  - Early planing.
  - Super upwind performance.
  - Comfortable ride.
  - Smooth response.



MULTICHANNEL

BOARD: 50/FIFTY

This aggressive bottom concept, dedicated for freestyle/ wakestyle, allows the rider to perfectly control the board during the hardest of tricks. The sharp channel from tip-to-tip of the board make it ride super smoothly, like it's on a rail. Thanks to this, you can ride with shorter fins (40mm) without no problems whatsoever. An additional concave improves board control even further.

- Advantages:
- Super board control.
  - Stability during the ride and landings.
  - Excellent pop.
  - Precise response.
  - Very good edge grip.
  - Ability to use shorter fins (40mm).



DOUBLE HYDRODYNAMIC

BOARD: 2HD

A long concave combined with a Dedicated Hydrodynamic Rocker line allows for impressive speed from the 2HD, with great stability and control throughout the ride. The board has great grip and rides like a rocket, while the design on the bottom of the board improves landing stability... not least after after chunky Megaloops.

- Advantages:
- Fast ride.
  - Incredible grip, stability and control.
  - Very stable landings.
  - Smooth response.



HYBRID CHANNELS

BOARD: SKIM FOIL

The main objectives of the two long and deep channels from tip to tip are in strengthening and stiffening the whole construction, thus making this hydrofoil board stiff and durable. The edges of the board are bent downwards to prevent it from drifting when getting up and riding on the foil, while guaranteeing super control and a lot of fun throughout the ride when you're without the foil.

- Advantages:
- Stiff and durable construction.
  - Solid control.
  - Precise hydrofoil response and feeling.

NOBILE KITEBOARDING TECHNOLOGIES



**APS TECHNOLOGY ADDED PRE-STRESS (KITEBOARDS)**  
APS Technology – Pre-Stress. Pre-Stressing means the intentional creation of initial tension in a structure, for the purpose of improving its strength properties. In kiteboarding, Pre-Stress allows the board to be loaded with energy during production. Storing the energy inside the board makes it a bit stiffer and far more torsion resistant, which results in astonishing pop on the water. Pre-Stress technology also allows us to build thinner and lighter boards which are actually more durable.  
Patented by Nobile.



**NCS – NOBILE SPLIT CONNECTION**  
NCS – Nobile Split Connection – available in all Nobile Splitboards. The NCS – Nobile Split Connection allows you to separate your board in half in seconds and pack it into your standard luggage, together with the rest of your travel gear, which means no more extra baggage costs! The NCS – Nobile Split Connection provides a strong connection and offers premium durability, improved comfort and uncompromised performance.  
Patented by Nobile.



**3D TECHNOLOGY**  
3D Technology developed by Nobile remains an unrivalled milestone in the realms of kiteboarding technology. Advanced flex management makes it extraordinarily comfortable on landings, gives it magnificent impact resistance and tons of control. The 3D Technology allows more flex in selected areas of the board. As a result, the board features shorter reaction times and better response, whilst still remaining easy to ride and ultimately forgiving.  
Invented by Nobile.



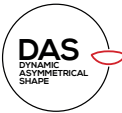
**ELLIPTICAL PROGRESSIVE CONCAVE**  
Elliptical Progressive Concave (EPC) combines the advantages of both a flat-bottomed board and a concave. The tail area is completely flat, whilst the center section of the board features the concave, and the resulting shape benefits from earlier planing.  
Patented by Nobile.



**CAV - COMPLETE ANTI-VIBRATION TECHNOLOGY**  
By using advanced core materials, laminates and variable flex zones, we've managed to eliminate almost all vibrations that occur during the ride. Complete Anti-Vibration Technology (CAV) not only makes the ride smoother and faster, but also provides exceptional grip in all conditions.  
Invented by Nobile.



**HYDRODYNAMIC ROCKER LINE**  
The Hydrodynamic Rocker Line was developed after careful analysis of water movement underneath the kiteboard. Hydrodynamic Profile is designed to reduce water drag, optimizing the board shape directly to the water flow itself. The advantages over traditional rocker with a flat center are increased board speed and improved acceleration.  
Invented by Nobile.



**DYNAMIC ASYMMETRICAL SHAPE**  
Dynamic Asymmetrical Shape is designed around the Human Concept, to enhance your performance and work in harmony with your body. We have tailored the outline of the heel-side rail to provide more grip, better upwind performance and maximum pop. On the weaker toe-side, the curve radius is increased to improve the carving potential and comfort. At the same time, DAS decreases the foot pressure necessary to hold an edge.  
Invented by Nobile.



**POP GROWER**  
This special "W" shape cut keeps the tips of the board really flexible, to provide explosive pop. It's like pieces of Semtex mounted under the tip and tail of the board, so you can now fly higher than anyone else on the water!



**AIRLIGHT CORE**  
The backbone of our advanced-tech, large surface boards. A blend of superlight core materials and wood, developed to reduce the overall weight of the kiteboard.



**X-REACTIVE FLEX SYSTEM**  
X-Reactive Flex System – the X layout of carbon and Kevlar is the perfect combination. While carbon supports rebound forces and edge grip, Kevlar reduces vibrations to a minimum. Together these result in excellent pop, quick response and optimal torsion.



**WOODCORE**  
There is no better material for a board core than wood. With its harmonious characteristics, combining strength, flex, light weight and vibration damping, wood is still the uncrowned king of core materials.



**TRIAx**  
This layout of fibers transfers power directly to the edges and creates perfect flex. As a result the board features aggressive filling, quick response and harmonious flexibility.



**ABS SANDWICH CONSTRUCTION**  
This industry standard construction was introduced by Nobile in kiteboarding production. It provides direct power transfer to the edges and vibration damping, resulting in easy to handle and precise boards.  
Invented by Nobile.



**CAP**  
The construction with a box structure, where edges of wood core are fully secured with a laminate, owing to which the board is lighter, stiffer and much more break-resistant.



**DOUBLE TRUST RECTANGULAR CHANNELS**  
The technology behind the Double Trust Rectangular Channels has been worked out after profound analysis of the production stages. Their unique deep, rectangular shape ensures unprecedented grip in all directions, stability while maneuvering, and making the ride effortless at the same time. These channels allow you to use shorter fins in twintips and only two fins in wave boards. Thanks to channel-making technology, we maintained the best elements of our boards: responsiveness, flex, thin board structure and a light weight.

ROCKER LINES

FLAT HYDRODYNAMIC

A flat and gentle bend ensures good stability and a smooth speed increase: a very important element in the early kitesurfer training stages.

FLAT CONTINUOUS

A slightly increasing rocker bend from the middle of the board toward the tips is one of the most effective solutions, giving the rider arguably the most beautiful thing in kitesurfing: solid speed with continuously good pop when jumping. A continuously increasing rocker bend from the middle of the board toward the tips is cut from the circumference. This kind of line gives a predictable and an anticipated feeling from the board, and there are no surprises during pops and bends.

HYDRODYNAMIC

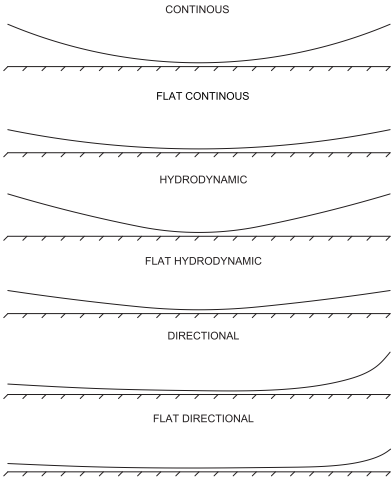
An aggressive rocker line which is responsible for pop and control during jumps during quick turns and high speed.

FLAT DIRECTIONAL

A directionally flattened line of a classic wave rocker gives very fast acceleration and control when turning in low-wind conditions.

DIRECTIONAL

A directional line rocker based on a classic surfing line, with a flat tip and a long board nose, which has been modified to guarantee the perfect ride as well as perfect wave-turning capability.



ADVANCED FLEX ENGINEERING.

SOFT, MEDIUM, HARD

ADVANCED FLEX ENGINEERING

AFE has been introduced into Nobile products to control every part of the board's flex. However, we've divided it into three main zones: Tail, Center and Nose, as well as a three-step scale: soft, medium and hard.

SOFT FLEX

This is the most comfortable and friendly type of flex in our boards, giving you full freedom when riding and turning, and forgiving all the minor mistakes at the same time. It guarantees you unbelievable pleasure during the ride and reduces chop on the water.

MEDIUM FLEX

Created for keeping top performance of the board, while maintaining comfort during the ride. Reaction to transferred impulses is fast, so the board can be controlled easily.

HARD FLEX

Designed for the most demanding and technical riders, ensuring immediate response, perfect control and some mega pop. Uncompromising boards, prepared perfectly for any given kitesurfing technique.

In our 50/Fifty wakestyle board we have introduced Negative Flex, which is important for those who ride in boots. This is also in our three-step scale and three board zones as well.

BOARDS CATEGORY



BOARDS SPECIFICATION

MODEL	SIZE	IFS	FINS	BAG	BOARD WEIGHT	STANCE	RIDER WEIGHT	SPLITBOARD (FOLD UP)
NBL	134x39	IFS PRO	PA 55mm	x	2,70	561,1 - 611,1	60 - 80	-
	138x40,5	IFS PRO	PA 55mm	x	2,90	561,1 - 611,1	70 - 85	-
	142x42	IFS PRO	PA 55mm	x	3,00	561,1 - 611,1	75 +	-
	146x43	IFS PRO	PA 55mm	x	3,10	561,1 - 611,1	85 +	-
	150x45	IFS PRO	PA 55mm	x	3,20	561,1 - 611,1	90+	-
FLYING CARPET	160x46	IFS PRO	PA 55mm	x	3,40	611,1 - 711,1	45+	-
FLYING CARPET TANDEM	163x48	IFS PRO x 2	PA 55mm	x	4,40	611,1 - 761,1 + 365,8 (inside)	40 - 180	-
SKIM	130x50,5	x	PA 40mm	x	3,00	-	40+	-
T5	134x41	x	G10 55mm	x	2,70	561,1 - 611,1	60 - 80	-
	137x42	x	G10 55mm	x	2,80	561,1 - 611,1	65 - 85	-
	140x44	x	G10 55mm	x	2,90	561,1 - 611,1	75 +	-
50/FIFTY	131x38,5	x	G10 40mm	x	2,60	591 - 644,8	Up to 55	-
	134x39	x	G10 40mm	x	2,70	611 - 664,8	50 - 75	-
	138x39,5	x	G10 40mm	x	2,80	611 - 664,8	60 - 85	-
	140x42	x	G10 40mm	x	3,00	611 - 664,8	70 +	-
	143x43	x	G10 40mm	x	3,20	611 - 664,8	70+	-
NHP	134x41	x	G10 55mm	x	2,70	611,4 - 661,4	60 - 85	-
	138x43	x	G10 55mm	x	2,90	611,4 - 661,4	75+	-
	142x45	x	G10 55mm	x	3,10	611,8 - 661,8	50 - 85	-
NHP CARBON	134x41	x	G10 55mm	x	2,60	611,4 - 661,4	60 - 75	-
2HD	138x43	x	G10 55mm	x	2,80	611,4 - 661,4	75 +	-
	134x42,5	x	G10 55mm	x	2,80	611,4 - 661,4	50 - 85	-
T5 WMN	131x39	x	G10 55mm	x	2,50	561,1 - 611,1	50 - 60	-
	134x40	x	G10 55mm	x	2,60	561,1 - 611,1	55+	-
NHP WMN	129x38	x	G10 55mm	x	2,50	579,1 - 629,1	Up to 55	-
	132x40	x	G10 55mm	x	2,60	579,1 - 629,1	45 - 65	-
NHP SPLIT	135x41	x	G10 55mm	x	2,80	611,4 - 661,4	50+	-
	130x39	x	G10 40mm	Splitcover NHP	2,90	613,6 - 663,6	50 - 70	73,2x39
	134x41	x	G10 40mm	Splitcover NHP	3,00	613,6 - 663,6	60 - 85	75,2x41
FLYING CARPET SPLIT	138x43	x	G10 40mm	Splitcover NHP	3,20	613,6 - 663,6	75+	77,2x43
	160x46	x	G10 55mm	Splitcover Flying Carpet	3,60	611,1 - 711,1	45+	87,7x46
INFINITY SPLIT	5'6"	x	FCS 4,7	Splitcover Infinity	4,50	622	50 - 120	91,5x48,5
NHP CARBON SPLIT	134x41	x	G10 40mm	Splitcover NHP	2,60	613,6 - 663,6	60 - 85	75,2x41
	138x43	x	G10 40mm	Splitcover NHP	2,80	613,6 - 663,6	75+	77,2x43
INFINITY SPLIT CARBON	5'6"	x	FCS 4,7	Splitcover Infinity	3,80	622	50 - 110	91,5x48,5
SKIM FOIL	146 x 46,5	3x Strap Wave	PA 55mm	x	4,10	602-642	40+	-
INFINITY SPLIT FOIL	5'2"	3x Strap Wave	FCS 4,7	Splitcover Infinity	4,80	646	50 - 110	90x47,5
NHP SNOWKITE	148	x	x	x	2,95	440 - 600	45 - 75	-
	157	x	x	x	3,10	500 - 660	55 - 85	-
	164	x	x	x	3,25	500 - 660	80+	-
RC2000	200	x	x	x	5,60	460 - 700	75+	-

IFS GEN 2 L/XL	L/XL	White or Black	-	-	1,00	-	-	-
IFS GEN2 S/M	S/M	White or Black	-	-	0,95	-	-	-
FINY G10 55MM SET	55mm	Orange	-	-	0,25	-	-	-
FINY G10 40MM SET	40mm	Orange	-	-	0,20	-	-	-
FINY PC 55MM SET	55mm	Orange	-	-	0,15	-	-	-
FIN FCS 4,7 SET	4,7	Orange	-	-	0,25	-	-	-





# NOBILE

LIFE'S BETTER WHEN YOU'RE KITEBOARDING NOBILE!

NOBILE SPORTS SP. Z O.O.,  
WAPIENICKA 24B, 43-382 BIELSKO BIAŁA,  
POLAND

**General inquires:**  
[contact@nobilesports.com](mailto:contact@nobilesports.com)

**Client Service Department:**  
[client.service@nobilesports.com](mailto:client.service@nobilesports.com)

**Marketing:**  
[marketing@nobilesports.com](mailto:marketing@nobilesports.com)

T. +48 33 822 42 40 | F. +48 33 81 62 423

TIN / NIP: PL 5472099824

[WWW.NOBILEKITEBOARDING.COM](http://WWW.NOBILEKITEBOARDING.COM)

